

NW500

Non-Mydriatic Retinal Camera

Enhanced image quality in ambient light,
even for eyes with small pupils.



Next-generation fundus imaging offering bright and sharp images in well-lit conditions¹, even in eyes with small pupils².

Sharp, high-quality images
Small pupils
Easy to use
Robotic



OVERVIEW



Slit-scan technology to image through **small pupils** (ϕ 2.0mm or larger³)



12MP sensor for **enhanced image quality**⁴.



Automatic, rapid, one-touch image capture



Flexible positioning against a wall/in a corner



Compact design fits into almost any exam setting



Wide variety of connectivity options for **seamless integration** and workflow⁵

1. A room with a brightness of 623 lux or less

2. ϕ 2.0 mm or larger, tested on model eye

3. Confirmed with model eye

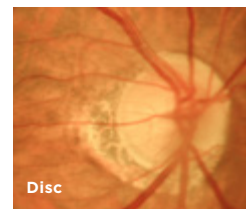
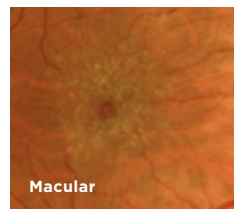
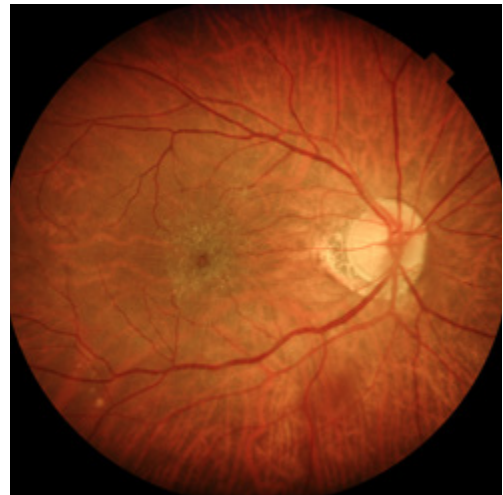
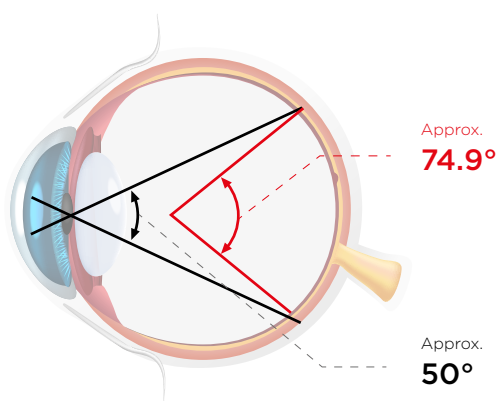
4. As compared to Topcon non-mydratric retinal camera TRC-NW400

5. Multiple connections with Direct DICOM, Ez Capture, IMAGEnet[®] 6, Shared folder and Direct Storage (USB/LAN)

KEY FEATURES

EXCELLENT QUALITY FUNDUS IMAGE

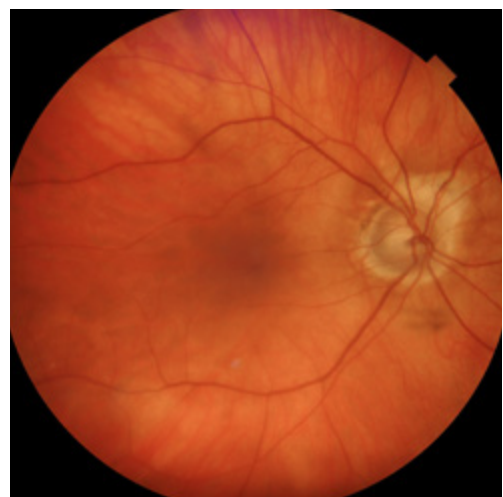
At an angle of view of 50 degrees (approx. 74.9 degrees at the spherical centre of the eye)⁶, the NW500 can capture a wider area than conventional models. Capable of capturing fundus images through a pupil diameter as small as 2.0mm, it provides sharp, detailed colour fundus images in dark and brightly lit rooms.¹



*Epiretinal membrane
Courtesy: Hanemoto Eye Clinic, Japan*

INTRODUCING NEW SLIT-SCAN PHOTOGRAPHY

Innovative slit-scan illumination and rolling shutter mechanism in the NW500 produces excellent quality colour fundus images with less flare and shadow.⁴ The slit-scan mechanism helps to overcome one of the known causes of poorly graded images with its ability to effectively image through small pupils. This innovative technology also helps the NW500 capture sharp, high-quality fundus images, regardless of miosis and the lighting conditions, unlike conventional fundus cameras.



*Eye with cataract, pupil size: $\phi 2.0\text{mm}$
Courtesy: Silicon Valley Eyecare Optometry and Contact Lenses in Santa Clara, CA*

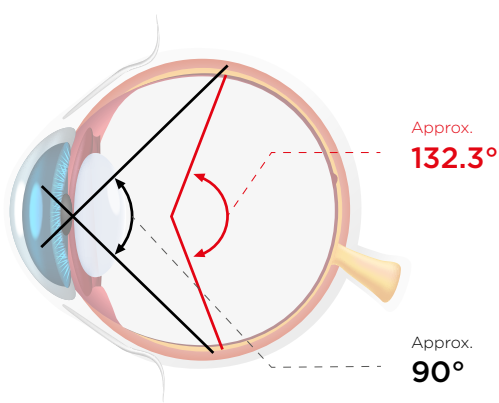
⁶ Xincheng Yao, Devrim Toslak, Taeyoon Son, Jiechao Ma. Understanding the relationship between visual-angle and eye-angle for reliable determination of the field-of-view in ultra-wide field fundus photography. *Biomedical Optics Express*, 2021 Sep 30;12(10):6651-6659.

Small pupil $\Phi 2.0\text{mm}^2$
Wide 50° field of view



PANORAMIC WIDE-FIELD PHOTOGRAPHY⁷

In peripheral photography mode, up to 9 internal fixation positions are available to shoot peripheral areas, making it possible to create a wide panorama image with an approx. 90° -degrees (approx. 132.3° degrees at the spherical centre of the eye) angle of view.



BILATERAL 2-FIELD PHOTOGRAPHY

After capturing the optic nerve head, the fixation target automatically moves to the macular position and captures continuously. The NW500 allows users to confidently and smoothly shoot fundus images at different fixation positions without the need for intermediate previews.

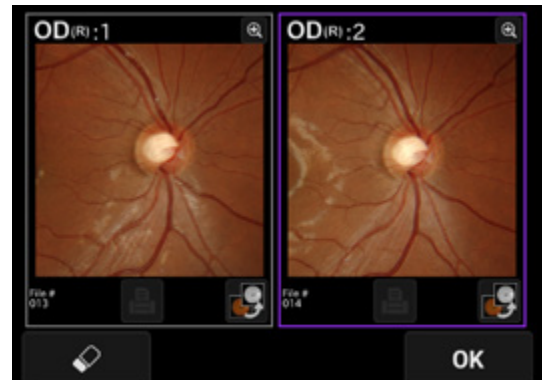


² $\Phi 2.0$ mm or larger, tested on model eye
⁷ IMAGEnet[®] 6 is required to generate panoramic images.

FEATURES

STEREO PHOTOGRAPHY^{8,9}

By displaying the left and right images side-by-side for stereoscopic viewing, it is possible to observe the shape and depression of the optic nerve head, as well as the state of compression and traction.

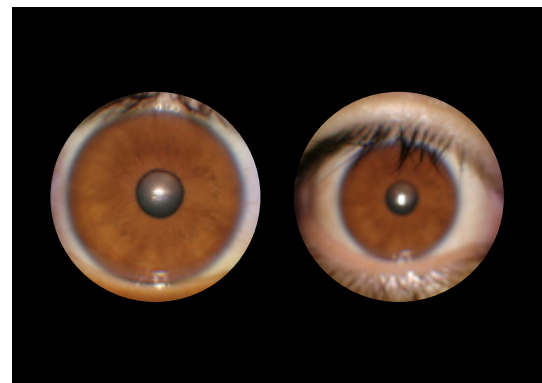


EASE OF USE

Alignment, focusing, shooting and movement between the right and left eyes, are operated automatically with a single touch, making the NW500 easy to operate¹⁰. The need to recapture is reduced, even when taking pictures of eyes with small pupils, contributing to the overall efficiency of the fundus photography workflow.



The manual mode is used for external photography. The camera will switch to the shooting screen without auto-alignment or auto-focus. While observing the live image displayed on the monitor, it is possible to capture any area, including the pupil, iris, conjunctiva etc.¹¹



8. Performed on the monitor screen or IMAGeNet® 6

9. Glasses for stereo viewing are not included

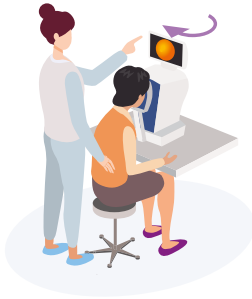
10. If the auto-shoot setting is turned on.

11. The intended use of manual photography mode is to capture the eye's appearance as a reference. It is not intended for diagnosis.

FEATURES

SPACE-SAVING

The touch panel monitor offers 360 degrees of rotation, giving the operator the flexibility to capture fundus photography from any position. The small footprint of the device means it can be installed virtually anywhere, allowing for optimal use of the examination room.



BACK



SIDE



FRONT

CASE IMAGES



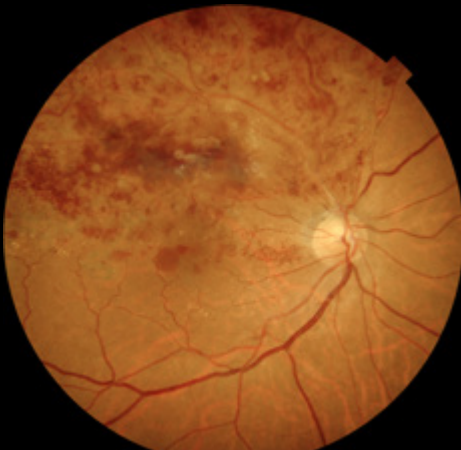
A. Glaucoma



B. Diabetic Retinopathy (DR)



C. Retinal Haemorrhage



D. Branch Retinal Vein Occlusion



E. Central Serous Chorioretinopathy

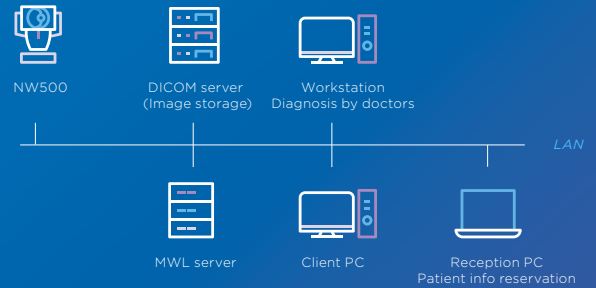


F. Epiretinal Membrane

CONNECTIVITY

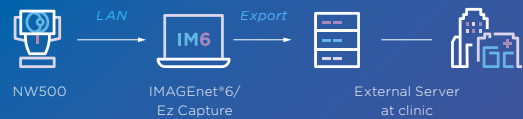
DIRECT DICOM

NW500 is DICOM compliant, making it easy to integrate with PACS and EMR programs.



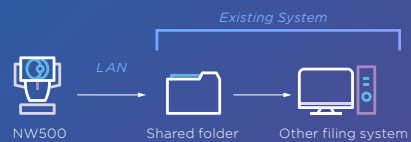
EZ CAPTURE/ IMAGENET®6

Ez Capture is standard capture software. NW500 also saves digital images to IMAGEnet® 6.



SHARED FOLDER

Save images directly to a shared folder on a network. Using a shared folder, third-party software, such as diagnostic AI, can retrieve images from NW500 and save them to their software.



DIRECT STORAGE

Direct storage is the simplest configuration and does not require an external PC. Convenient for mobile stations or when a network is not being used.

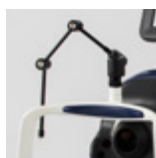


SPECIFICATIONS

ANGULAR FIELD OF VIEW	50°
OPERATING DISTANCE	35.5mm
PUPIL DIAMETER FOR PHOTOGRAPHY	Normal : ϕ 2.5mm or higher Small pupil: ϕ 2.0mm or higher (confirmed with model eyes)
RESOLVING POWER ON FUNDUS	Colour image-capturing <ul style="list-style-type: none"> • Centre: 60 lp/mm or higher • Middle (r/2): 40 lp/mm or higher • Periphery (r): 25 lp/mm or higher
MEASURING RANGE FOR THE DIOPTRIC POWER OF THE PATIENT'S EYE	-33D to +40D -13D to +12D (when used without diopter correction lens) -33D to -12D (when used with the minus diopter correction lens) +11D to +40D (when used with the plus diopter correction lens)
INTERNAL FIXATION TARGET	OLED The display method is adjustable: <ul style="list-style-type: none"> • Positions • Steady light/blinking light • Blinking speed • Brightness • Shapes
EXTERNAL FIXATION TARGET	LED <ul style="list-style-type: none"> • Auto-alignment • Auto-focus (usable only when used without diopter correction lens) • Auto-shoot (usable only when used without diopter correction lens) • Auto-small pupil (usable only when used without diopter correction lens)
AUXILIARY FUNCTIONS FOR PHOTOGRAPHY	
POWER SOURCE	
Source voltage	AC100-240V
Power input	70-120VA
Frequency	50-60Hz
DIMENSIONS AND WEIGHT	
Dimensions	332-426mm (W) x 540-680mm (D) x 519-769mm (H)
Weight	20kg

NOTE : In this product, 12MP digital camera is used.

OPTIONAL ACCESSORY



External fixation target
EF-2

TOPCON CORPORATION

75-1 Hasunuma-cho, Itabashi-ku, Tokyo 174-8580, JAPAN.
Phone: +81-(0)3-3558-2522/2502 Fax: +81-(0)3-3965-6898
www.topconhealthcare.jp

TOPCON HEALTHCARE SOLUTIONS EMEA OY

Saaristonkatu 9, 90100 Oulu, FINLAND
Phone: +358-20-734-8190
E-mail: thsema.sales@topcon.com
www.topconhealthcare.eu

TOPCON EUROPE MEDICAL B.V.

Essebaan 11, 2908 LJ Capelle a/d IJssel
P.O. Box 145, 2900 AC Capelle a/d IJssel
THE NETHERLANDS
Phone: +31-(0)10-4585077
Fax: +31-(0)10-4585045
E-mail: medical@topcon.com
www.topconhealthcare.eu

TOPCON DANMARK

Praestemarksvej 25, 4000 Roskilde
DANMARK
Phone: +45-46-327500
Fax: +45-46-327555
E-mail: info.todk@topcon.com
www.topconhealthcare.eu/dk_DK

TOPCON SCANDINAVIA

Neogatan 2, P.O.Box 25, 43151 Mölndal
SWEDEN
Phone: +46-(0)31-7109200
Fax: +46-(0)31-7109249
E-mail: info.hcs.se@topcon.com
www.topconhealthcare.eu/sv_SE

TOPCON ESPAÑA

Oficina Principal en España
Frederic Mompou, 4,
08960 Sant Just Desvern, Barcelona, SPAIN
Phone: +34-93-4734057
Fax: +34-93-4733932
E-mail: medica@topcon.com
www.topconhealthcare.eu/es_ES

TOPCON ITALY

Viale dell' Industria 60,
20037 Paderno Dugnano, (MI) ITALY
Phone: +39-02-9186671
E-mail: info_tit@topcon.com
www.topconhealthcare.eu/it_IT

TOPCON FRANCE MEDICAL

1 rue des Vergers, Parc Swen,
Bâtiment 2, 69760 Limonest, FRANCE
Phone: +33-(0)4-37 58 19 40
Fax: +33-(0)4-72 23 86 60
E-mail: topconfrance@topcon.com
www.topconhealthcare.eu/fr_FR

TOPCON DEUTSCHLAND MEDICAL

Hanns-Martin-Schleyer Strasse 41,
D-47877 Willich, GERMANY
Phone: (+49)2154-885-0
Fax: (+49)2154-885-177
E-mail: info@topcon-medical.de
www.topconhealthcare.eu/de_DE

TOPCON POLSKA SP. Z. O. O.

ul. Warszawska 23, 42-470 Siewierz
POLAND
Phone: +48-(0)32-670-50-45
Fax: +48-(0)32-671-34-05
E-mail: info.tpl@topcon.com
www.topconhealthcare.eu/pl_PL

TOPCON GREAT BRITAIN MEDICAL

Topcon House, Kennet Side, Bone Lane,
Newbury, Berkshire RG14 5PX
UNITED KINGDOM
Phone: +44-(0)1635-551120
Fax: +44-(0)1635-551170
E-mail: medical.tgbm@topcon.com
www.topconhealthcare.eu/en_UK

TOPCON IRELAND MEDICAL

Unit 292, Block G, Blanchardstown,
Corporate Park 2 Ballycoolin
Dublin 15, D15 DX58, IRELAND
Phone: +353-12233280
E-mail: medical.ie@topcon.com
www.topconhealthcare.eu/en_IE



IMPORTANT In order to obtain the best results with this instrument, please be sure to review all user instructions prior to operation.

Not all products, services or offers are approved or offered in every market, and products vary from one country to another. Contact your local distributor for country-specific information and availability.

©2023 Topcon Corporation | M000098E-3 | The product is in conformity with Regulation EU 2017/745 on medical devices (MDR)